

# 产品介绍》

## Ab+ 系列

单晶硅光伏组件

Mono crystalline Solar Module

390/385/380/375/370W



### 高转换率 High Efficiency

采用先进的制造工艺的太阳能电池，组件转换效率最高可达20.1%  
Advanced solar cell technology ensures, The high module efficiency up to 20.1%.



### 正公差保证 Positive Tolerance

0 ~ +5W的组件功率保证  
Module guarantees a positive -only power tolerance of 0 to +5w to bring extra benefit.



### 出色的承载能力 Strong Load Capacity

组件通过了高达2400Pa风载以及5400Pa雪载的认证检测  
Module is capable to withstand 2400Pa wind loads and 5400Pa Snow loads.



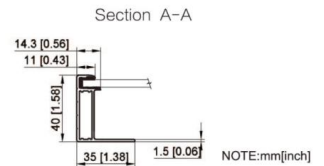
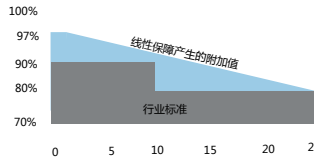
### 可靠的产品质量 Reliable quality

产品制造符合ISO9001国际质量管理体系  
Module is manufactured in accordance with international quality standards ISO9001



### 优异的防护性能 Higher Weatherproof Rating

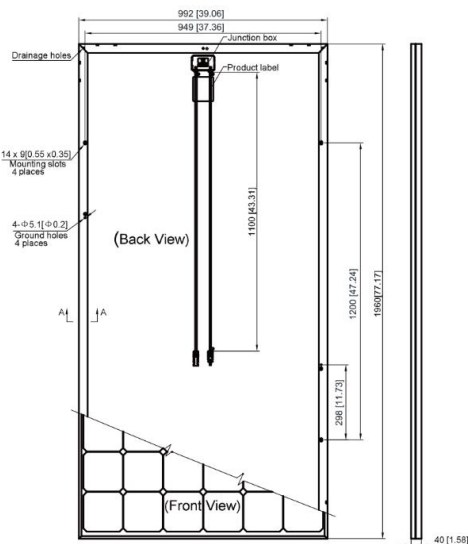
接线盒提供高达IP68的防护等级  
J-Box performs module with an environmental protection rating to IP68.



### 线性输出功率保证 Linear output power guaranteed

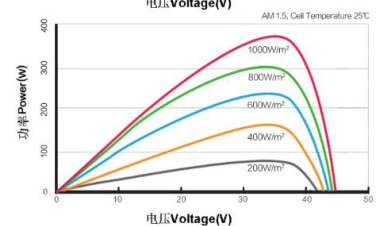
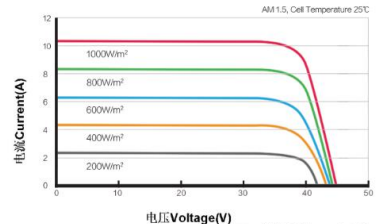
10年产品质保 10 year product warranty

25年线性输出功率保证 25years linear power output



### 电流-电压 & 功率-电压 曲线

Current-Voltage & Power-Voltage Curve (GEP-Ab+375MH)



## 电气参数Electrical Characteristics

标准测试条件 (STC)	GEP-Ab+390M	GEP-Ab+385M	GEP-Ab+380M	GEP-Ab+375M	GEP-Ab+370M
	GEP-Ab+390MH	GEP-Ab+385MH	GEP-Ab+380MH	GEP-Ab+375MH	GEP-Ab+370MH
最大功率 (Pmax) Maximum Power (Pmax)	390W	385W	380W	375W	370W
功率公差 Tolerance of power	0/+5W	0/+5W	0/+5W	0/+5W	0/+5W
最大功率点的工作电压(Vmp) Maximum Power Voltage(Vmp)	39.6V	39.4V	39.2V	39.0V	38.8V
最大功率点的工作电流(Imp) Maximum Power Current(Imp)	9.85A	9.77A	9.70A	9.62A	9.54A
开路电压(Voc) Open Circuit Voltage(Voc)	48.4V	48.2V	48.1V	48.0V	47.9V
短路电流(Isc) Short Circuit Current (Isc)	10.12A	10.07A	10.02A	9.96A	9.91A
组件效率 Module Efficiency	20.1%	19.8%	19.5%	19.3%	19.0%
组件工作温度 Operating module Temperature	- 40°Cto +85°C				
最大系统电压 Maximum system(DC) Voltage	1000V/1500V(IEC)				
最大保险丝额定电流 Series Fuse Rating	15A				
额定电池工作温度(NOCT)* NOCT*	45±2°C				
最大功率温度系数 Temperature Coefficients of Pmax	- 0.410%/°C				
开路电压温度系数 Temperature Coefficients of Voc	- 0.340%/°C				
短路电流温度系数 Temperature Coefficients of Isc	+ 0.060%/°C				

## 机械参数 MECHANICAL CHARACTERISTICS

电池类型 Solar Cell	单晶156.75×156.75mm ( 6 英寸 ) 5主栅线 Mono crystalline 156.75×156.75mm(6 inches )5BB	
电池数量 Number of cells	72( 6×12 )	
组件尺寸 Dimensions	1960×992×40mm ( 77.17×39.06×1.57英寸 inches )	
重量 Weight	22.1Kg ( 48.7磅lbs )	
玻璃 Front Glass	3.2mm(0.13英寸 inches)钢化玻璃front glass	
边框 Frame	阳极氧化铝合金Anodized aluminum alloy	
接线盒 Junction Box	IP68防护等级rated	
电缆 Cable	4mm <sup>2</sup> 光伏电缆 solar cable 1100mm(43.3英寸 inches )	
接插头 Connector	JK4/Z4S-abcde	

## 包装方式PACKING CONFIGURATION

	20GP	40GP
单托组件数量 Pieces per pallet	26	26
托盘数 pallets per container	10	24
组件总数 Pieces per container	260	624

注意 NOTE:

1. 产品设计或具体规范参数如有更改, 恕不另行通知。

1.Design and specifications are subject to change without prior notice.

2. 请参阅组件安装手册或联系我们以保障产品的正确安装与使用。

2.Refer to the installation and operating manual or contact Green energy power Renewable for detailed information on approved installation and use of this product.