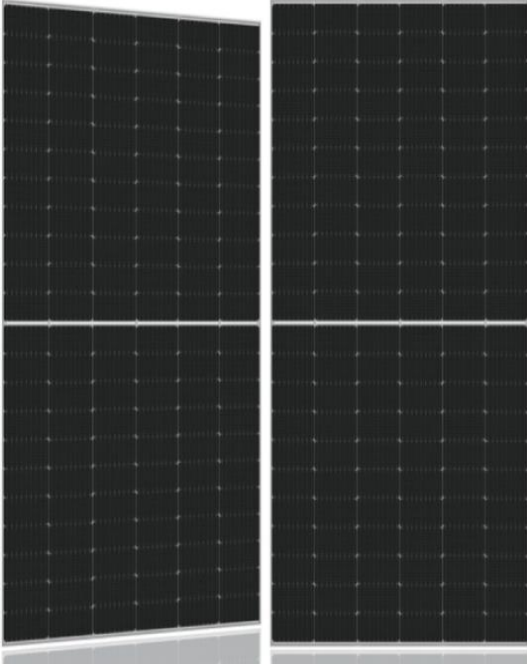


产品介绍

GfMcMH系列
单晶硅光伏双玻组件
 Mono crystalline
 Double Glass
 Solar Module
 480/485/490/495/500W



高转换率 High Efficiency

采用先进的制造工艺的太阳能电池，组件转换效率最高可达21.0%
 Advanced solar cell technology ensures, The high module efficiency up to 21.0%.



正公差保证 Positive Tolerance

0 ~ +5W的组件功率保证
 Module guarantees a positive-only power tolerance of 0 to +5w to bring extra benefit.



出色的承载能力 Strong Load Capacity

组件通过了高达2400Pa风载以及5400Pa雪载的认证检测
 Module is capable to withstand 2400Pa wind loads and 5400Pa Snow loads.



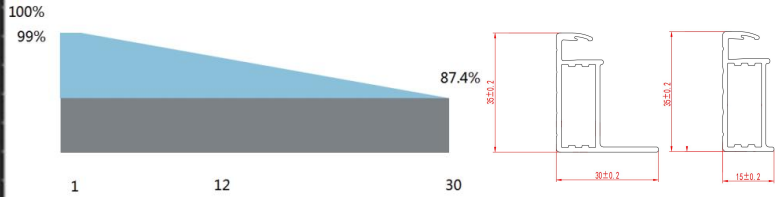
可靠的产品质量 Reliable quality

产品制造符合ISO9001国际质量管理体系
 Module is manufactured in accordance with international quality standards ISO9001



优异的防护性能 Higher Weatherproof Rating

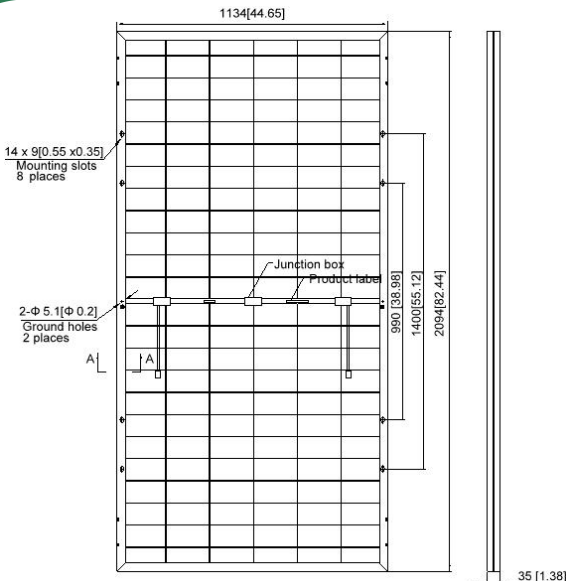
接线盒提供高达IP68的防护等级
 J-Box performs module with an environmental protection rating to IP68.



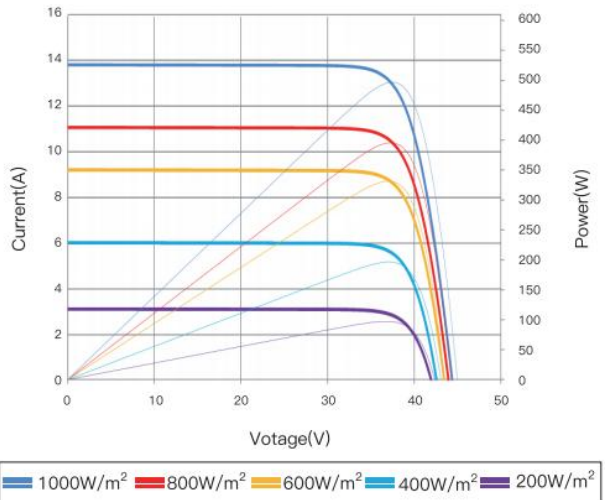
线性输出功率保证 Linear output power guaranteed

12年产品质保 12 year product warranty

30年线性输出功率保证 30years linear power output



Current-Voltage & Power-Voltage Curve (GEP-GfMc500MH)



电气参数Electrical Characteristics

标准测试条件 (STC)	GEP-GfMc480MH	GEP-GfMc485MH	GEP-GfMc490MH	GEP-GfMc495MH	GEP-GfMc500MH
最大功率 (Pmax) Maximum Power (Pmax)	480W	485W	490W	495W	500W
功率公差 Tolerance of power	0/+5W				
最大功率点的工作电压(Vmp) Maximum Power Voltage(Vmp)	37.62V	37.81V	37.99V	38.17V	38.35V
最大功率点的工作电流(Imp) Maximum Power Current(Imp)	12.76A	12.83A	12.90A	12.97A	13.04A
开路电压(Voc) Open Circuit Voltage(Voc)	45.07V	45.20V	45.33V	45.45V	45.59V
短路电流(Isc) Short Circuit Current (Isc)	13.65A	13.72A	13.79A	13.85A	13.93A
组件效率 Module Efficiency	20.2%	20.4%	20.6%	20.8%	21.0%
组件工作温度 Operating module Temperature	- 40°C to +85°C				
最大系统电压 Maximum system(DC) Voltage	DC1500V(IEC)				
最大保险丝额定电流 Series Fuse Rating	30A				
额定电池工作温度(NOCT)* NOCT*	42±2°C				
最大功率温度系数 Temperature Coefficients of Pmax	- 0.36%/°C				
开路电压温度系数 Temperature Coefficients of Voc	- 0.304%/°C				
短路电流温度系数 Temperature Coefficients of Isc	+ 0.050%/°C				

机械参数 MECHANICAL CHARACTERISTICS

电池类型 Solar Cell	单晶182×91mm 10主栅线 Mono crystalline 182×91mm 10BB
电池数量 Number of cells	132 (6×22)
组件尺寸 Dimensions	2094×1134×35mm (82.44×44.65×1.38英寸 inches)
重量 Weight	29Kg (63.93磅 lbs)
前玻璃 Front Glass	2.0mm (0.08英寸 inches) 钢化玻璃 front glass
后玻璃 Back Glass	2.0mm (0.08英寸 inches) 打孔玻璃 back glass
边框 Frame	阳极氧化铝合金 Anodized aluminum alloy
接线盒 Junction Box	IP68防护等级 rated
电缆 Cable	4mm²光伏电缆 solar cable 300mm(11.81英寸 inches) 客户定制长度 customized length
接插头 Connector	MC4 PV-XT101.1/Z4S-abcde
双面率 Double-sided factor	75%±5%

包装方式PACKING CONFIGURATION

	40HC
单托组件数量 Pieces per pallet	31
托盘数 pallets per container	22
组件总数 Pieces per container	682

注意 NOTE :

- 1.产品设计或具体规范参数如有更改,恕不另行通知。Design and specifications are subject to change without prior notice.
- 2.请参阅组件安装手册或联系我们以保障产品的正确安装与使用。Refer to the installation and operating manual or contact Green energy power Renewable for detailed information on approved installation and use of this product.